

**ATTENTION:**

OBSERVE PRECAUTIONS FOR HANDLING ESD-SENSITIVE DEVICES

**Removal/Installation of Major Assemblies -  
Ion eVo/eVo Walleto/Elite Edge**

**ECS Motherboard Removal**

1. Turn off and unplug the game.
2. Unlock and open the CPU section.
3. Remove the 3 screws securing the I/O board to the I/O mounting plate. Remove all connections from the I/O board, taking note of their positions, then remove the board. See Figure 1.

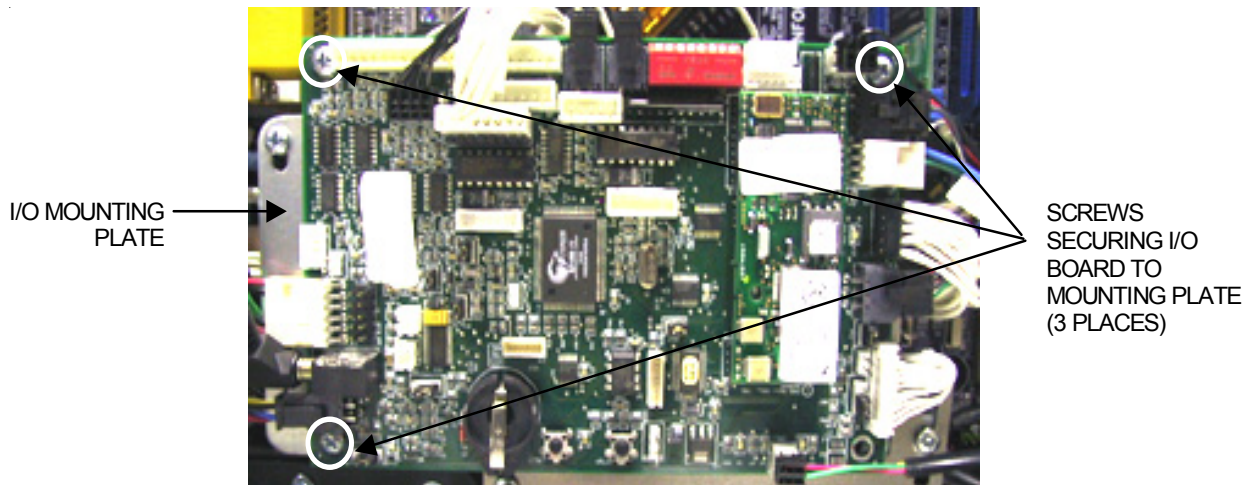


FIGURE 1 - I/O BOARD AND MOUNTING PLATE

4. Remove the 2 screws securing the VGA monitor cable's bracket, then remove the bracket (Elite Edge games only). Remove the 4 screws securing the I/O mounting plate, then remove the plate. See Figure 2.

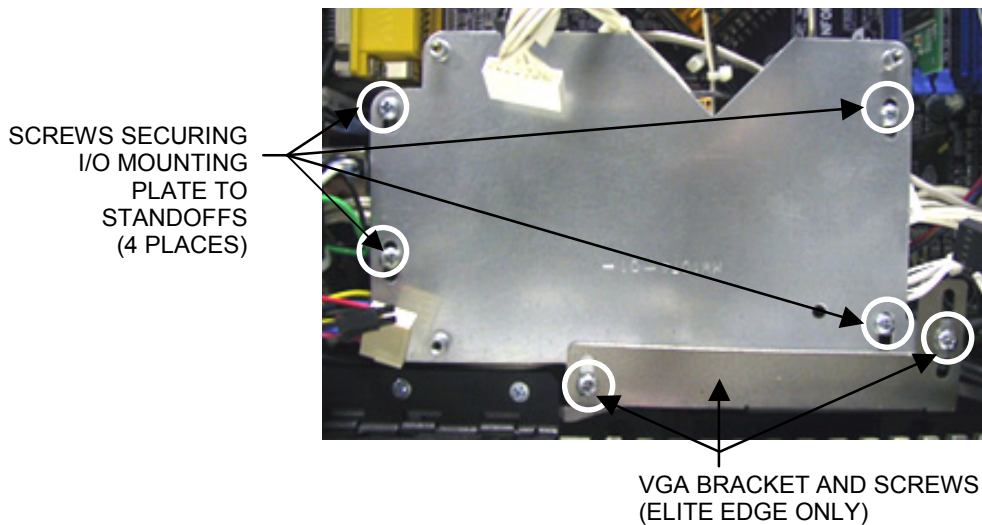


FIGURE 2 - I/O MOUNTING PLATE

**Troubleshooting Information - Removal/Installation of Major Assemblies -  
Ion eVo/eVo Walleto/Elite Edge**

## **ATTENTION:**

OBSERVE PRECAUTIONS FOR HANDLING ESD-SENSITIVE DEVICES

### **Removal/Installation of Major Assemblies - Ion eVo/eVo Walleto/Elite Edge (cont'd)**

5. Remove the 2 screws securing the motherboard assembly to the game, located on the right side of the motherboard. See Figure 3.

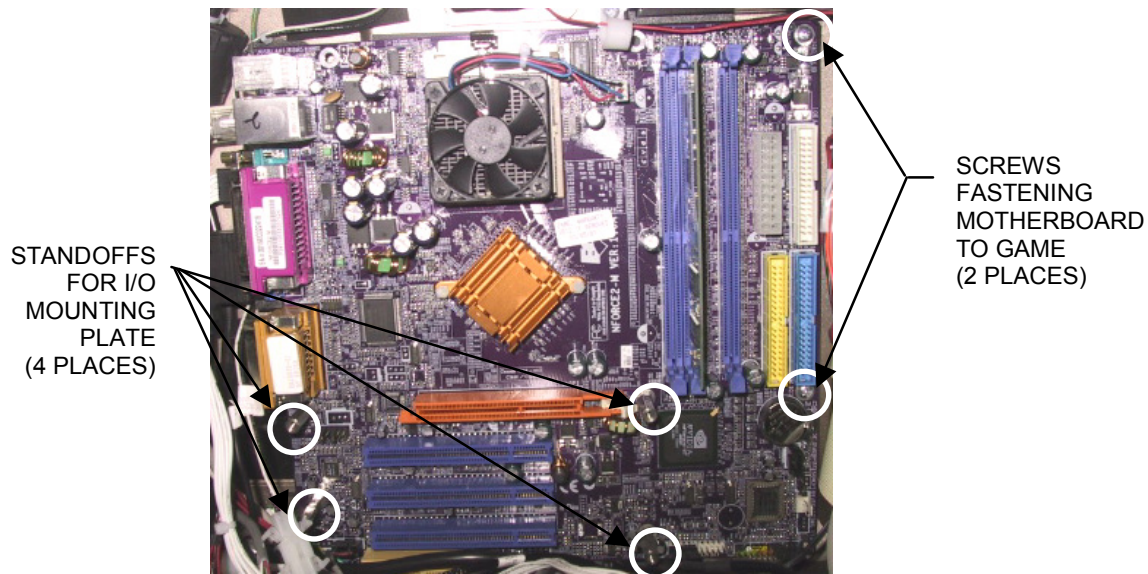


FIGURE 3 - ECS MOTHERBOARD ASSEMBLY

6. Disconnect all connections to the motherboard, then carefully remove the board. Remove the 4 standoffs and hex nuts that were supporting the I/O mounting plate (see Figure 3). Place the motherboard into an anti-static bag for storage. **NOTE: Be sure to read the Motherboard Handling Precautions before handling the board.**

### **ECS Motherboard Installation**

1. Secure the 4 standoffs for the I/O mounting plate to the new motherboard with the hex nuts. Situate the motherboard on top of the fish paper, and secure with 2 mounting screws inserted on the right side of the board. See Figure 3.
2. Reconnect all connections to the motherboard.
3. Secure the I/O mounting plate to the standoffs with 4 mounting screws. Secure the VGA bracket to the I/O mounting plate with 2 screws (Elite Edge games only). See Figure 2.
4. Line up the I/O board on the mounting plate, and secure with 3 screws. See Figure 1.
5. Replace all connections on the I/O board.
6. Close and lock the CPU section.
7. Plug in and turn on the game.

**ATTENTION:**

OBSERVE PRECAUTIONS FOR HANDLING ESD-SENSITIVE DEVICES

**Removal/Installation of Major Assemblies -  
Ion eVo/eVo Walleto/Elite Edge/Megatouch Entertainer**

**ASUS Motherboard Removal**

1. Turn off and unplug the game.
2. Unlock and open the CPU section.
3. Remove the 3 screws securing the I/O board to the I/O mounting plate. Remove all connections from the I/O board, taking note of their positions so you can reconnect them later. See Figure 4.

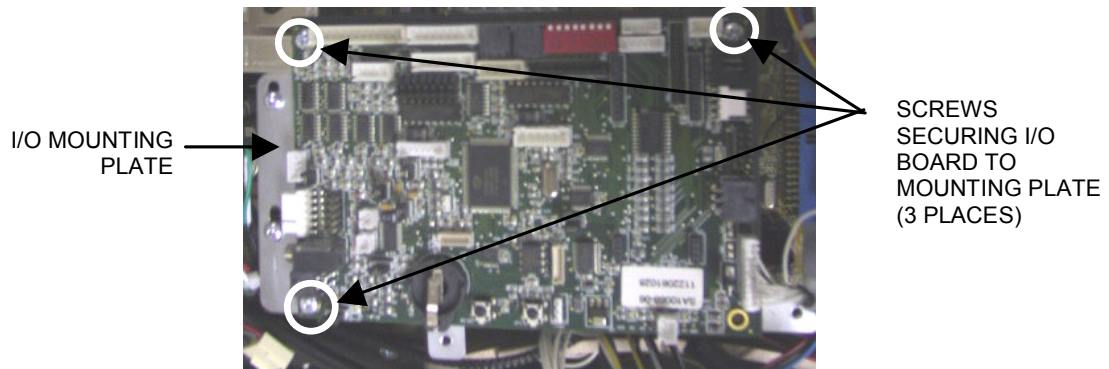


FIGURE 4 - I/O BOARD AND MOUNTING PLATE

4. Remove the fish paper from underneath the I/O board. See Figure 5.

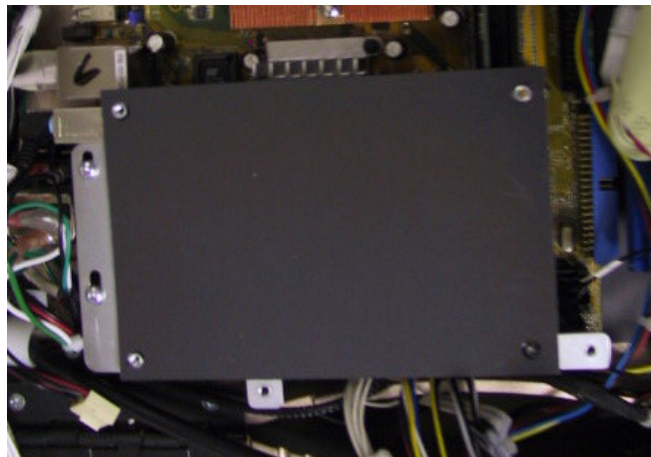


FIGURE 5 - FISH PAPER BETWEEN I/O BOARD AND MOUNTING PLATE



**ATTENTION:**

OBSERVE PRECAUTIONS FOR HANDLING ESD-SENSITIVE DEVICES

**Removal/Installation of Major Assemblies -  
Ion eVo/eVo Walleto/Elite Edge/Megatouch Entertainer (cont'd)**

5. Remove the 2 screws securing the VGA cable mounting bracket, then remove the bracket (Elite Edge games only). Remove the 3 or 4 screws securing the I/O mounting plate, then remove the plate. See Figure 6.

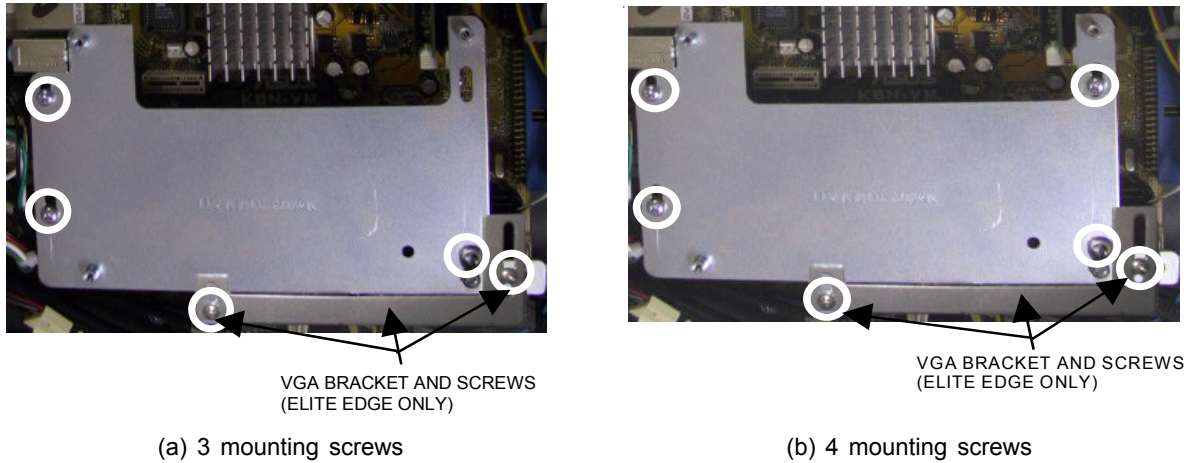


FIGURE 6 - ASUS I/O MOUNTING PLATE

6. If your I/O mounting plate was secured by 3 screws: Remove the screw securing the cable clamp to the power supply bracket. Remove the 2 screws securing the motherboard assembly to the game, located on the right side of the motherboard (Figure 7).

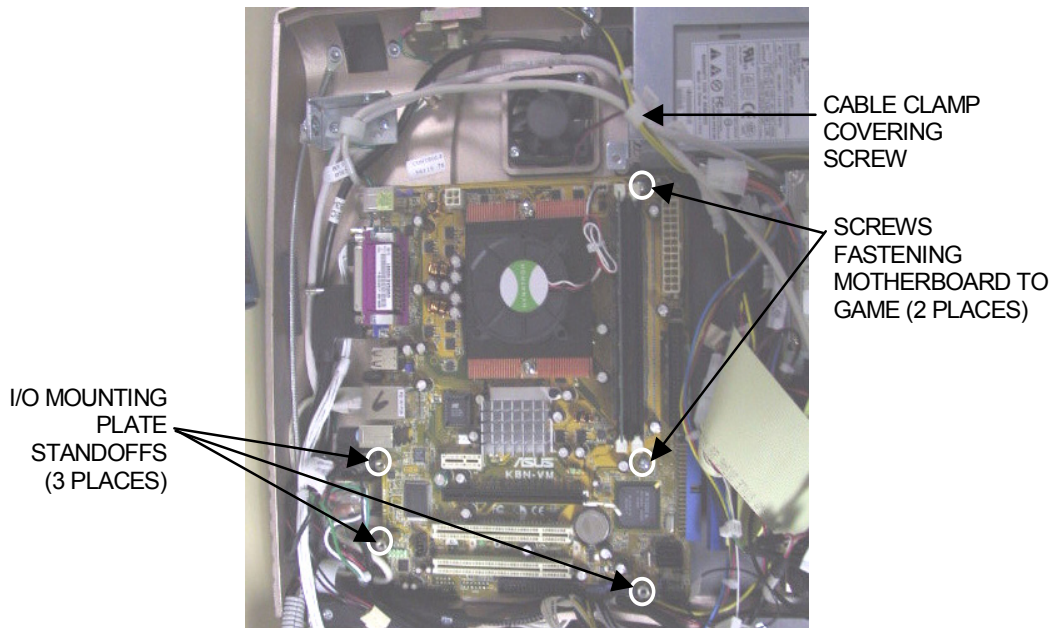


FIGURE 7 - ASUS MOTHERBOARD ASSEMBLY (3 STANDOFFS & 2 SCREWS)

**ATTENTION:**

OBSERVE PRECAUTIONS FOR HANDLING ESD-SENSITIVE DEVICES

**Removal/Installation of Major Assemblies -  
Ion eVo/eVo Walleto/Elite Edge/Megatouch Entertainer (cont'd)**

7. *If your I/O mounting plate was secured by 4 screws:* Remove the screw securing the cable clamp to the power supply bracket. Remove the screw securing the motherboard assembly to the game, located on the right side of the motherboard (Figure 8).

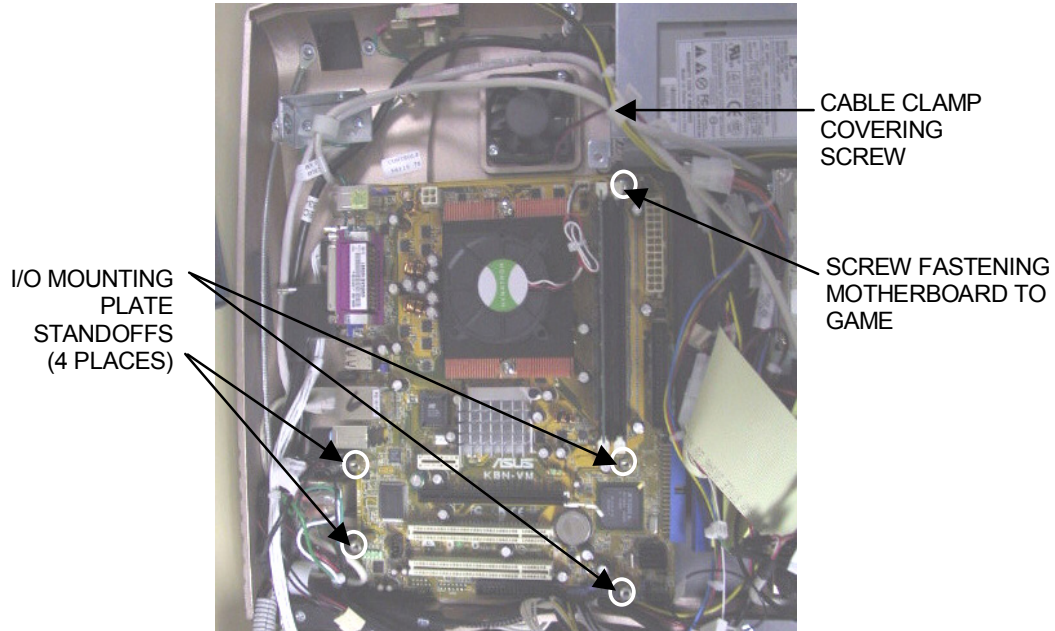


FIGURE 8 - ASUS MOTHERBOARD ASSEMBLY (4 STANDOFFS & 1 SCREW)

8. Disconnect all connections to the motherboard, taking note of their positions so you can reconnect them to the new board. Carefully remove the motherboard, as well as the 3 or 4 standoffs and hex nuts that were supporting the I/O mounting plate. See Figures 7 and 8. Place the motherboard into an anti-static bag for storage. **NOTE: Be sure to read the Motherboard Handling Precautions before handling the board.**

## **ATTENTION:**

OBSERVE PRECAUTIONS FOR HANDLING ESD-SENSITIVE DEVICES

### **Removal/Installation of Major Assemblies - Ion eVo/eVo Walleto/Elite Edge/Megatouch Entertainer (cont'd)**

#### **ASUS Motherboard Installation**

1. Replace the I/O mounting plate's 4 metal standoffs on the motherboard, and secure with hex nuts. (If your game originally had 3 standoffs supporting the I/O plate, then use the extra standoff that was shipped with your replacement motherboard.) See Figure 8. Situate the motherboard on top of the fish paper, then shift the board to the left until it touches the plastic stops. Lock the board underneath the 2 stops that are shaped like hooks. See Figure 9.

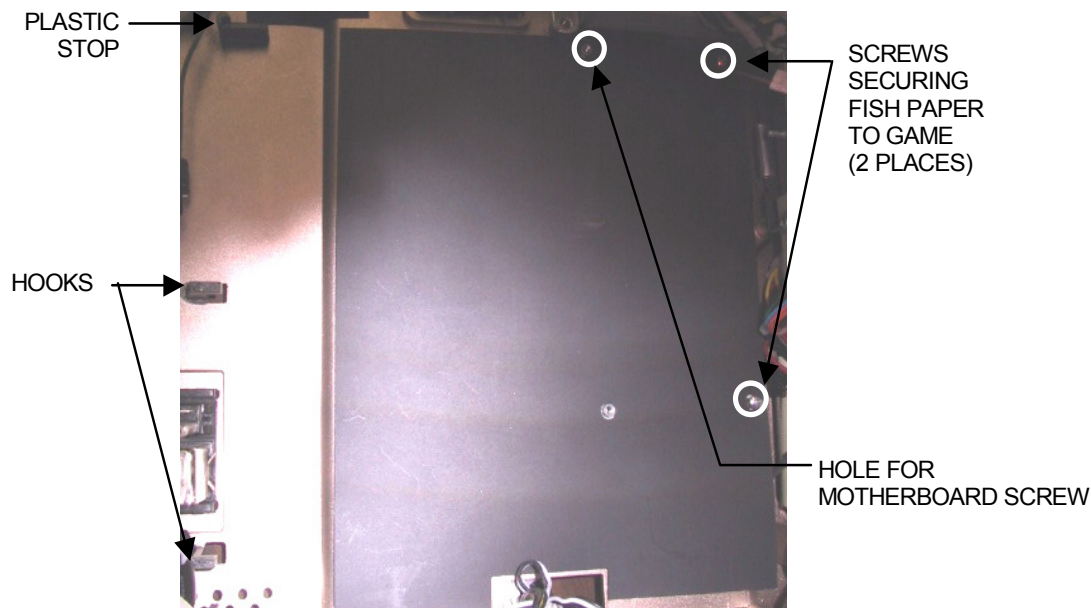


FIGURE 9 - FISH PAPER AND PLASTIC STOPS

2. Secure the motherboard to the game with one screw, and reconnect all connections. See Figure 8.
3. Secure the I/O board mounting plate with the 4 mounting screws. Secure the VGA bracket to the I/O plate with 2 screws (Elite Edge games only). See Figure 6.
4. Replace the fish paper on the mounting plate. See Figure 5.
5. Line up the I/O board on the fish paper and secure to the mounting plate with 3 screws (Figure 4).
6. Replace all connections on the I/O board.
7. Close and lock the CPU section.
8. Plug in and turn on the game.