

**ATTENTION:**

OBSERVE PRECAUTIONS FOR HANDLING ESD-SENSITIVE DEVICES

**Removal/Installation of Major Assemblies -  
Ion Aurora**

**Motherboard Removal**

1. Turn off and unplug the game.
2. Unlock the rear door and open it if it is hinged, or remove if it is detachable.
3. Reach under the center of the top of the cover to locate the rotary draw latch (see Figure 1). Turn the wing on the latch counterclockwise to disengage.

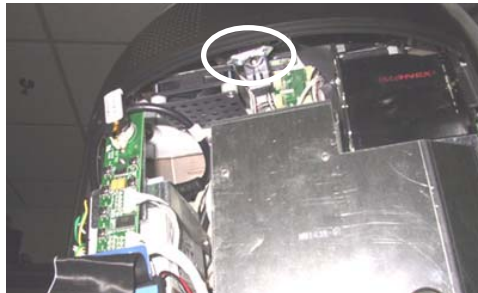


FIGURE 1 - ROTARY DRAW LATCH INSIDE TOP COVER

4. Unscrew the screw located in the center of the bottom of the cover (see Figure 2). Slowly lift the cover and disconnect the ground wire.



FIGURE 2 - SCREW IN CENTER OF BOTTOM COVER

5. Disconnect the power cord from the power supply. Remove the wing nut securing the OSD board and detach the board from the Velcro on the power supply bracket. Carefully set the OSD board aside. See Figure 3.

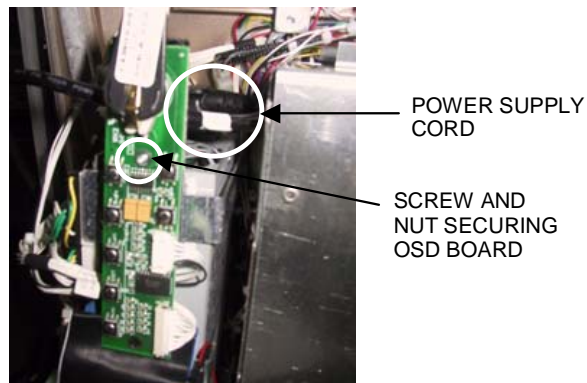


FIGURE 3 - OSD BOARD

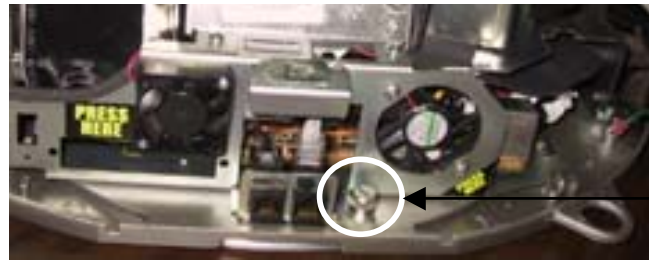
**Troubleshooting Information - Removal/Installation of Major Assemblies -  
Ion Aurora**

**ATTENTION:**

OBSERVE PRECAUTIONS FOR HANDLING ESD-SENSITIVE DEVICES

**Removal/Installation of Major Assemblies -  
Ion Aurora (cont'd)**

6. Remove the electronics tray by unscrewing the thumbscrew located in the middle of the rear of the tray and sliding the tray out. See Figure 4.



THUMBSCREW  
SECURING  
ELECTRONICS TRAY

FIGURE 4 - REAR VIEW OF ELECTRONICS TRAY

7. If applicable, disconnect the three black connectors (10-, 11- and 12-pin) connecting the electronics tray to the game in order to slide the tray out further (see Figure 5). If your game does not have these connectors, the harness is long enough to remove the tray.

CONNECTORS CONNECTING  
ELECTRONICS TRAY TO  
GAME (3 PLACES)

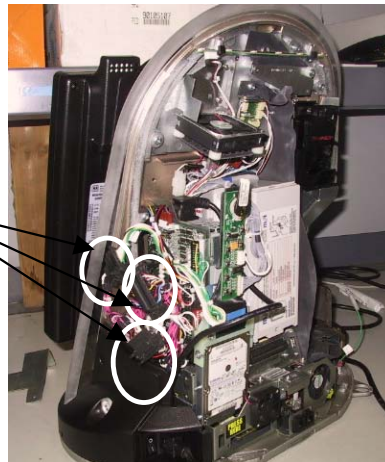


FIGURE 5 - REAR VIEW OF GAME

8. Move the hard drive/power supply tower out of the way of the motherboard by tilting it on its hinge 90 degrees to the left and supporting (if necessary). Remove all motherboard connections, noting their positions, and unscrew the motherboard in 6 places on a standard Aurora (see Figure 6), or in 2 places on an Aurora Widescreen (see Figure 7). Remove the motherboard from the tray.

**ATTENTION:**

OBSERVE PRECAUTIONS FOR HANDLING ESD-SENSITIVE DEVICES

**Removal/Installation of Major Assemblies -  
Ion Aurora (cont'd)**

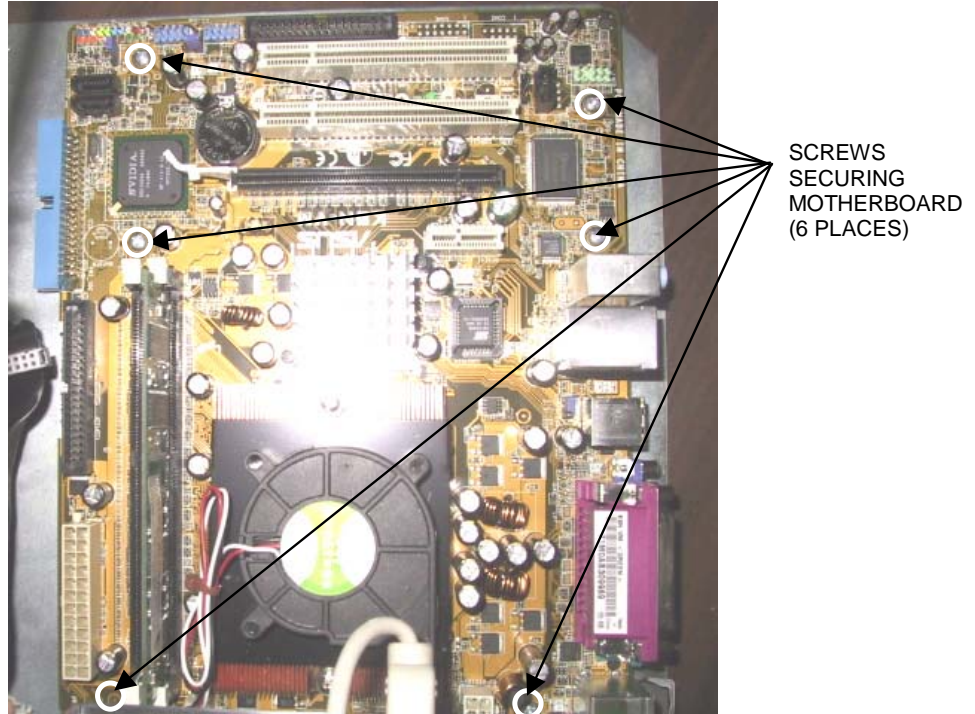


FIGURE 6 - SCREWS SECURING MOTHERBOARD TO GAME  
IN STANDARD AURORA

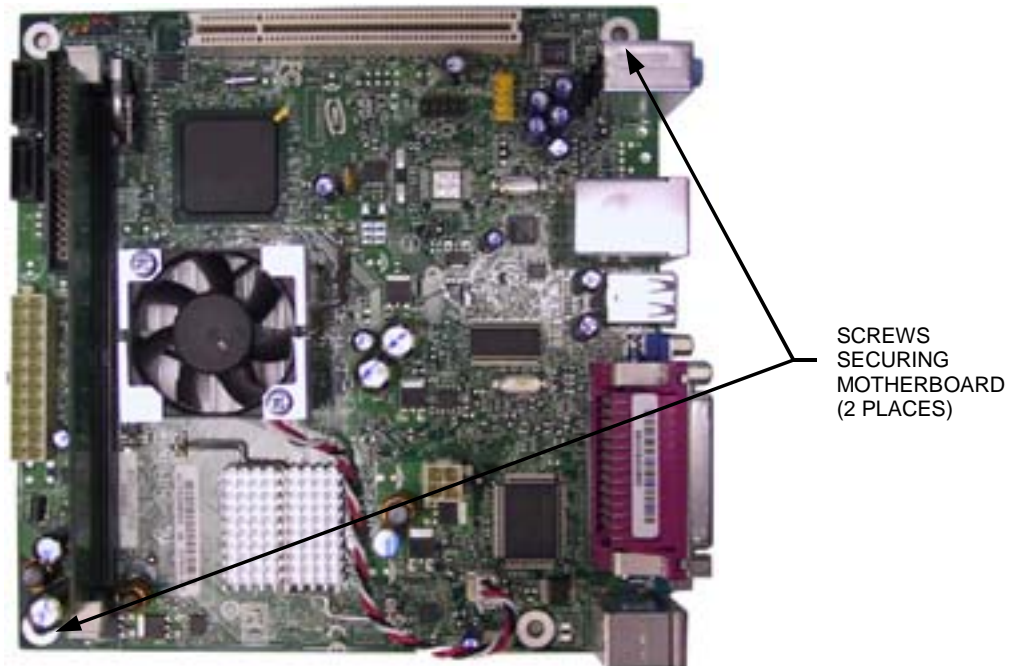


FIGURE 7 - SCREWS SECURING MOTHERBOARD TO GAME  
IN AURORA WIDESCREEN

**Troubleshooting Information - Removal/Installation of Major Assemblies -  
Ion Aurora**

**ATTENTION:**

OBSERVE PRECAUTIONS FOR HANDLING ESD-SENSITIVE DEVICES

**Removal/Installation of Major Assemblies -  
Ion Aurora (cont'd)**

**Motherboard Installation**

1. Situate the new motherboard on top of the fish paper, and secure to the electronics tray with 6 screws in a standard Aurora (see Figure 6) or 2 screws in an Aurora Widescreen (see Figure 7).
2. Restore all motherboard connections. Restore the hard drive/power supply tower to its upright position, and slide the electronics tray back into place, making sure that the connectors on the back of the hard drive bracket click into the connectors on the wall of the game, if applicable (see Figure 7). If you disconnected three connectors from the electronics tray to the game (see Figure 5), reconnect them. Secure the tray by screwing in the thumbscrew. See Figure 4.

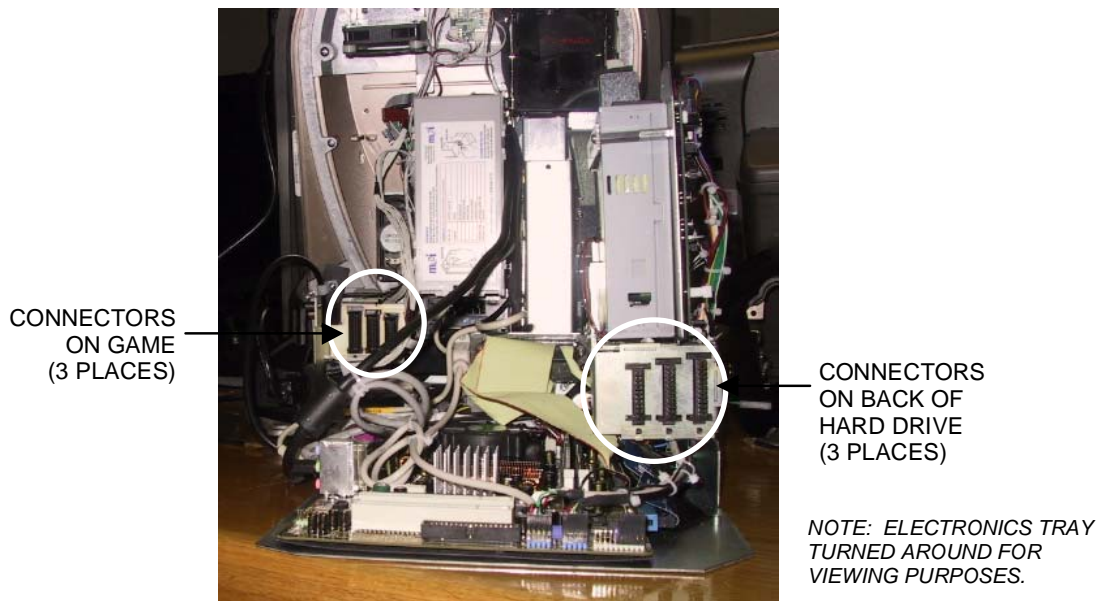


FIGURE 8 - CONNECTORS ON BACK OF HARD DRIVE BRACKET AND WALL OF GAME

**ATTENTION:**

OBSERVE PRECAUTIONS FOR HANDLING ESD-SENSITIVE DEVICES

**Removal/Installation of Major Assemblies -  
Ion Aurora (cont'd)**

3. Reconnect the power cord to the power supply. Reattach the OSD board to the Velcro on the power supply bracket and secure with one wing nut. See Figure 3.
4. Reconnect the ground wire to the rear cover and lower the cover into place, carefully lining up the 2 tabs on the cover with the 2 mating holes on the sides of the game. See Figure 9. Make sure the plastic lip on the bottom of the rear cover is behind the metal base.

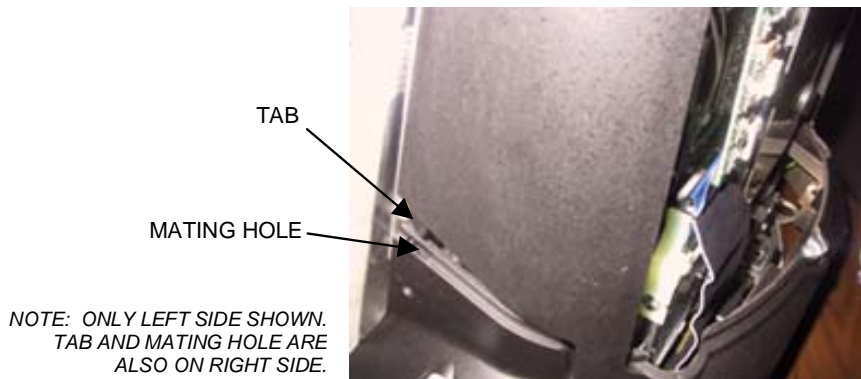


FIGURE 9 - SIDE VIEW OF GAME

Tighten the screw securing the bottom of the door. See Figure 2. Turn the wing on the draw latch clockwise to engage the latch (Figure 1).

5. Close (or reattach) and lock the rear door.
6. Plug in and turn on the game.