



merit entertainment

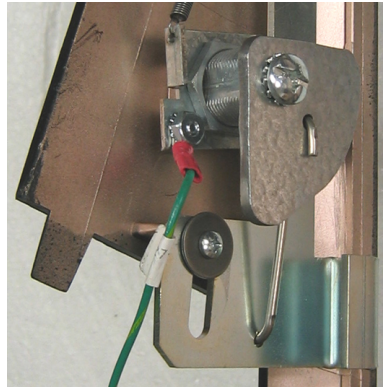
### Aurora Lock Replacement

If you wish to replace the lock(s) on your game, the specifications for the current locks are below. Use the cam from the existing lock and use the pictures below to aid in reinstalling the cam in the proper orientation.

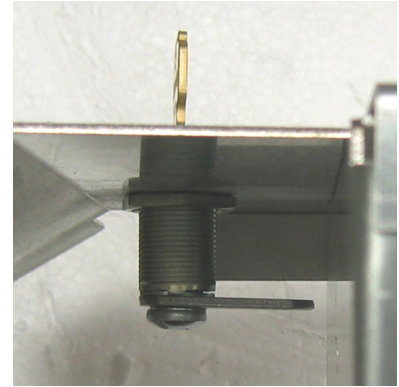
Additionally, each Aurora comes with a lock adapter if you want to change the locks from a square lock to a double D lock (see below).



METAL LOCK ADAPTER  
PROVIDED WITH GAME  
FOR USE WITH DOUBLE D LOCK



REAR COVER LOCK  
SHOWN IN LOCKED POSITION



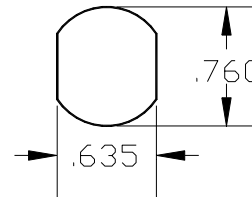
CASH BRACKET LOCK  
(available on some models)  
SHOWN FROM THE TOP  
IN LOCKED POSITION

#### Rear Door lock:

1 1/8" long barrel without cam  
90° clockwise to unlock, key removable locked  
Fits in standard lock mounting hole: .635" x .760"

#### Cash Bracket lock (if applicable):

7/8" long barrel, without cam  
90° clockwise to unlock, key removable locked  
Fits in standard lock mounting hole: .635" x .760"



STANDARD LOCK  
MOUNTING HOLE DIMENSION

There are many lock manufacturers that can supply locks to fit and function in this application. Provide the above information to your lock supplier to find an appropriate lock.

For your convenience, here are some sources that sell these locks:

CompX Fort  
3000 North River Road  
River Grove, IL. 60171  
Phone: 708.456.1100  
Fax: 708.456.9476

Penn Lock  
21 Noyes Ave  
Swoyersville, PA. 18704  
Phone: 570.288.5547  
Fax: 570.287.4750

Camlock Systems, Inc.  
4308 DiPaolo Center  
Glenview, IL. 60025  
Phone: 847-299-8830  
Fax: 847-299-8806